



**FASHIONABLE
LIVING**
STYLE
BEAUTY
HOME
FOOD
CULTURE
TRAVEL

CALIFORNIA STYLE

**ISLA
FISHER**

HAPPY, FUNNY
AND FABULOUS

**RUSTIC
GLAMOUR**

DENISE HALE'S
8,000-ACRE
SONOMA RETREAT

INSIDER ART

L.A.'S NEW CROP OF STARS

TRUE STYLE

THE LIGHTER SIDE OF SPRING FASHION

MARCH 2009 \$4.99



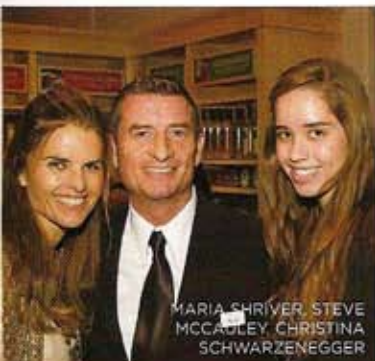
0 3>

**PLUS
HOT SPOTS**
TROPICAL TRAVEL
NEWS FLASH

0 70989 36205 5

WILLIAMS-SONOMA

L.A.'s fashionable Westsiders came out in droves to support the highly anticipated opening of Williams-Sonoma, Montana Avenue on October 29. Guests marveled at the new space as they sipped on Matanzas Creek wine and enjoyed a delectable food demo by chef Dana Slatkin. A percentage of proceeds benefited the Children's Action Network.



MARIA SHRIVER, STEVE
MCCAULEY, CHRISTINA
SCHWARZENEGGER



JULIA GORKIN,
ELIZABETH STEWART,
SHIVA RODE



KATRIEN VAN DER
SCHUEREN,
CHUCK WILLIAMS



JAMIE TISCH



JENNIFER PERRY



HOST COMMITTEE: LIZZIE DINKEL MEYERSON, ANDREA STANFORD, JAMIE TISCH,
BRITTANY LOVETT, HEATHER THOMAS, WINDSOR SMITH, SUSIE SHENBERG



MARCY CARMACK, STEPHEN
SILVER, STEPHANIE OSHMAN



LILY SAMII MODELS WEARING
S.H. SILVER JEWELRY

S.H. SILVER CO.

On December 16, San Francisco's finest gathered at the Ritz-Carlton Club & Residences on Market Street for an exclusive viewing of S.H. Silver's Candy collection of holiday jewels, displayed on models outfitted in couture creations by Lily Samii. Hosted by Jennifer Newsom and Steve Silver, guests sipped PlumpJack wine and specialty cocktails by Is Vodka as they delighted in the sparkling baubles on display—including a rare glimpse of the 104-carat Great Chrysanthemum Diamond.

PROMOTION



SONYA MOLODETSKAYA,
WILLIE BROWN



ELIZABETH THIERIOT,
LILY SAMII



JENNIFER NEWSOM



EDISON KESSLER,
GRET WEISBERG